



# SRTKeyEditor

---

*Guide*

AG

2012.08.02

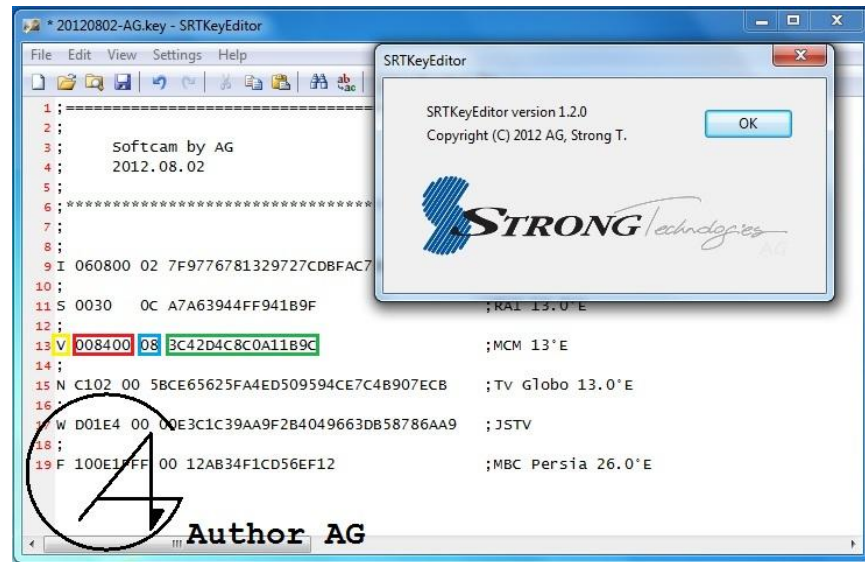
STRONG AG

STRONG AG

## SRTKeyEditor

In this method, the Key in a file that is known to Softcam, via USB or RS232C port are transmitted to the Receiver.

Softcam files can be using SRTKeyEditor, create or edit.



The above is provided as an example of a softcam:

✓ **Yellow:** for coding systems

( **I** for Irdeto, **S** for Seca, **V** for Viaccess, **N** for Nagravision, **W** for Cryptoworks, **F** for Biss )

✓ **Red:** Channel ID

✓ **Blue:** ID key

✓ **Green:** Key of Scrambled Channel

✓ ( ; ) for determining distance and used to write comment

- To use this feature must be activated on the receiver is patch has been shed.
- Shed additional key unusable and the device memory refuse and do not unduly occupy.
- For Strong receiver , Biss keys must be manually entered.